



Where can you eat, shop, play and stay on your visit to the Spokane region? To find complete destination information or to plan your next trip, just log on to VisitSpokane.com or call 1-888-SPOKANE.

If you're in town and looking for destination advice, our Travel Counselors are available to assist you seven days a week!



SPOKANE ARTS

601 W. 1st Avenue, Ste 1000 / Spokane, WA 99201

artshelper@spokanearts.org / 509.321.9614

spokanearts.org

EVENTS • PERFORMANCES • OPENINGS

SCULPTURE WALK SPOKANE



AN INFORMATIVE GUIDE
TO THE SCULPTURES OF
RIVERFRONT PARK AND
THE CENTENNIAL TRAIL



ENJOY AN ART WALK FULL OF WHIMSY AND HISTORY, WITH MANY SCULPTURES TO TOUCH AND INTERACT WITH.

Slide down The Childhood Express, feed the Garbage Goat, feel the spray of the Rotary Fountain, or take a seat for some Light Reading. It's a year-round outdoor museum just waiting for you to explore.



ALIVE, LIVELY, LIVING FOR RAMONA HODGES
Jim Hodges. 2008. Fabricated from three stainless steel panels, the sculpture has irregular edges on the tops and sides. Hodges calls the work “a paradox of solid steel and open windows, a fusion of man-made modernity and natural environment.” Commissioned by the Washington State Arts Commission in partnership with Washington State University-Spokane. ◀ 1

LIGHT READING
Peter Reiquam. 2006. This work of “outdoor furniture” functions both as a seating area and a beautiful aesthetic object. Commissioned by the Washington State Arts Commission in partnership with Washington State University-Spokane, *Light Reading* is located at the southwest corner of the WSU Academic Building. ▼ 2





COOPERATION

Michihiro Kosuge. 1998. A series of sculptures with granite boulders and basalt columns. Commissioned by the Washington State Arts Commission in partnership with Washington State University-Spokane. ◀ 3

3

RIVERPOINT OBSERVATORY

Patrick Zentz. 2002. Patrick Zentz designed this sculpture to reflect the natural setting of the campus. In appreciation of the massive deposits of columnar basalt in the region, the sculpture's base consists of cast hexagonal concrete columns. A steel and glass roof—etched with Mt. Spokane's topography and providing atmospheric information—creates a protective arbor. Commissioned by the Washington State Arts Commission in partnership with Washington State University-Spokane. ▼ 4

4



6

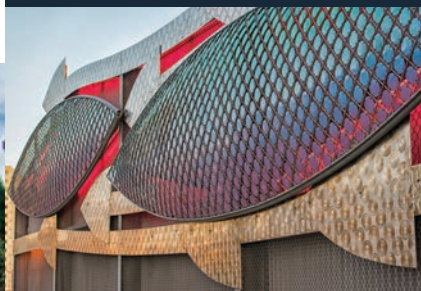
7

TAPESTRY & YOU ELEGANT FOWL

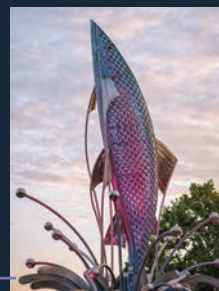
Bill & Karma Simmons. 2005 and 2014. An artist-made fence with sculptural vignettes stretching more than 1,100 feet which runs parallel to the Centennial Trail behind the Spokane Convention Center. Vignettes include symbols of industry, the Great Spokane Fire, moose and other Spokane stories. The owl, entitled *You Elegant Fowl*, sits south of the Spokane Convention Center adjacent to Spokane Falls Blvd. ▲ ◀ 6 & 7



8



9



CURRENT EVENT AND DANCE OF THE REDBAND

Ken Spiering. 2006 & 2015. *Dance of the Redband* is representative of the endangered Redband Trout which lives in the Spokane River. The sculpture is constructed of steel with filets of copper "scales" coated with a fired enamel surface. The sculpture is made of a material designed to reflect the light from the timed illumination system at its base. It is designed to complement the sculpture *Current Event* on the adjacent wall. ▲ 8 & 9 (also featured on the cover)

5

SHAMIL

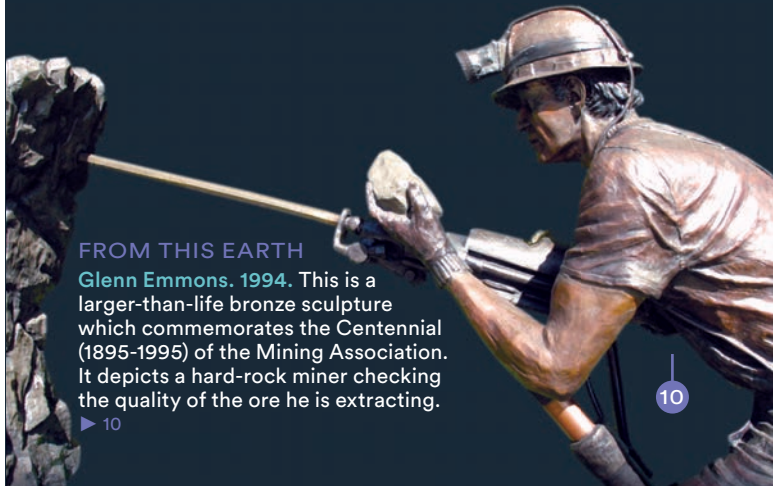
Anatoli Abgudaev. 1991. This hammered copper sculpture was a gift to the people of Spokane from our former Sister City, Makhachkala, Russia. Depicting a folk hero and general, the sculpture stands for the preference of peace over war, and the importance of freedom as a basis for peace. ◀ 5

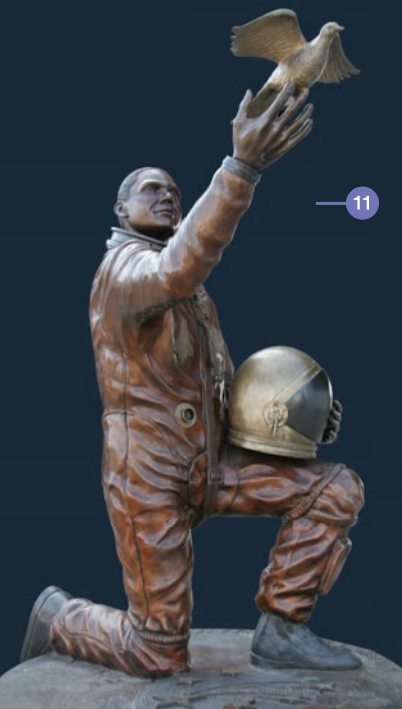


FROM THIS EARTH

Glenn Emmons. 1994. This is a larger-than-life bronze sculpture which commemorates the Centennial (1895-1995) of the Mining Association. It depicts a hard-rock miner checking the quality of the ore he is extracting. ▶ 10

10





11

MICHAEL P. ANDERSON MEMORIAL

Dorothy Fowler. 2006. Michael P. Anderson gave his life exploring space. This Spokane resident perished along with six other heroes in the Columbia Space Shuttle tragedy in 2003. ◀ 11



12

THE CALL AND THE CHALLENGE

Ken Spiering. 1986. This sculpture was commissioned in recognition of the centennial of Sacred Heart Medical Center. ▶ 12



13

UNTITLED (LANTERN)

Harold Balazs. 1974. A concrete sculpture in the form of a large-scale Japanese Lantern. ◀ 13

MOON CRATER

Glen Michaels. 1974. An abstract bronze sculpture of a moon crater with wood textures. ▼ 14

14



CENTENNIAL SCULPTURE

Harold Balazs. 1978. An abstract aluminum sculpture which floats, tethered, in the Spokane River. ▼ 16

16



17

THE CHILDHOOD EXPRESS

Ken Spiering. 1990. Spokane's Red Wagon sculpture was created in honor of Washington State's 1989 Centennial. It was a gift to the children of Spokane from the Junior League of Spokane, many local businesses and the Spokane Arts Commission. ▲ 17



15

ALUMINUM FOUNTAIN

George Tsutakawa. 1974. A tall aluminum fountain in an abstract style located on the southwest corner of the INB Performing Arts Center. In his lifetime, Tsutakawa created more than 80 fountains in the U.S. and Japan. ▲ 15

GOAT

Sister Paula Turnbull. 1974. This Corten steel sculpture of a goat will eat small pieces of trash with the aid of its vacuum digestive system. ▶ 18

18



19



AUSTRALIAN SUNDIAL

Sister Paula Turnbull. 1974. This sundial was created for Expo '74 and contains many symbolic Australian animals. ▼ 20

20



VIETNAM VETERAN'S MEMORIAL

Deborah Copenhaver. 1984. The names of all deceased Vietnam veterans from the Spokane area are engraved in the sculpture's pedestal. ▲ 19



21

MOUNTAIN SHEEP

Ken Spiering & students. This Corten steel sculpture depicts a mountain sheep climbing the rocks. ▲ 21

22

TOTEM NO. 2 (THEME STREAM SCULPTURE)

Nancy Genn. 1974. Abstract bronze sculpture. ◀ 22

ROTARY RIVERFRONT FOUNTAIN

Harold Balazs & Bob Perron.

2005. This interactive, monumental abstract structure is both a "big sprinkler" for child's and visual play. It was commissioned by Rotary Club 21 with support from donations from the community. ▼ 23

23



24

THE JOY OF RUNNING TOGETHER

David Govedare. 1984.

This Corten steel sculpture depicts runners of all kinds. It celebrates the Spokane tradition of Bloomsday, one of the largest timed races in the world. ▼ 24



25

THE PLACE WHERE GHOSTS OF SALMON JUMP

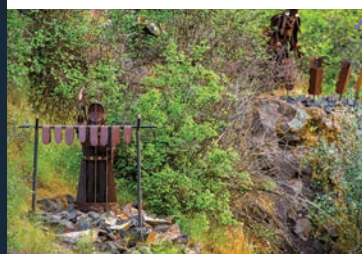
Sherman Alexie. 1995. This piece of artwork is a poem engraved in granite and formed into a spiral on the ground. The poem is about the Spokane Falls, which can be seen from where the poem is written, and is representative of the Spokane Tribe's heritage. ▲ 25

26

SALMON CHIEF & WOMAN IS HANGING SALMON ON A DRYING RACK, STAKING THE SALMON FOR SMOKING

Virgil "Smoker" Marchand.

2015. Three steel sculptures at Huntington Park below the Spokane Tribal Gathering Place. Commissioned by Avista. ▼ 26



FOOTSTEPS TO THE FUTURE

Deborah Copehaver-Fellows. 2009.

This sculpture exemplifies the most important core values in scouting: leadership, mentoring, and citizenship. Dean Dinneson and his 36 years of service to the Boy Scouts of Troop 325 was the impetus for creating this work. ▶ 27

27



MIXED FORMS

Harold Balazs. 2012. This steel sculpture is an ode to the geometry of life. Located in the midst of the Kendall Yards business district. ▼ 28

28



29

PARLIAMENT OF HARES

Beth Cavener Stichter. 2010.

This permanent bronze sculpture installation is a nod to the British fable of forest governance. Located in the midst of the Kendall Yards business district. ▲ 29



30

MILLENNIUM MOBIUS

Peter Forakis. 2000. A sculpture installation made of painted red steel, reflecting a fascination with and power of geometry. Located on The Nest Plaza. ▲ 30



31

BULLDOZER

Roger Berry. 2012. This corten steel sculpture reflects the silent power and toughness of those who built our communities. Located near the Maple Street Bridge overpass along Summit Parkway. ◀ 31



32

UNDER THE WING

Wayne Chabre. 2015.

Hammered copper gargoyles of Osprey and Salmon on the picnic shelter at Olmsted Brothers' Green park. ▶ 32



33

AL'S CUBE

Mario Uribe.

2011. A steel cube sculpture with internal patterns reflecting Buddhism's sacred geometric philosophy of heaven, earth and man. Located in Olmsted Brothers' Green park. ◀ 33



SO IT FLOWS

Bill & Karma Simmons. 2011. A horizontal corten steel fence structure that evokes the flow of the Spokane River. Located at the Hamblen Overlook along the Centennial Trail near Nettleton St. ▼ 34

34

